



# Medway Safeguarding Children Board

ANNUAL REPORT 2008-2009



## Contents

<b>Executive summary / performance summary</b>	<b>3</b>
<b>The role of the Medway Safeguarding Children Board</b>	<b>4</b>
<b>Board structure and membership</b>	<b>5</b>
<b>The Child death overview panel (CDOP)</b>	<b>5</b>
<b>Review of business plan 2008-09</b>	<b>6</b>
<b>1. Promoting best practice and improving safeguarding practice and procedures</b>	<b>7</b>
• Employment and professional standards	
• Child death review processes	
• Child protection processes	
• Serious Case Reviews (SCRs)/Lessons Learned Reviews (LLRs)	
• Multi-agency Training and workforce development	
• MSCB Annual Conference	
<b>2. Communicating and Engagement</b>	<b>13</b>
<b>3. Quality Assurance and Scrutiny</b>	<b>15</b>
• Performance Framework	
• Safe people and safe places	
• Section 11 Audits	
• Private Fostering	
• Quality assurance of MSCB	
<b>4. Local Safeguarding Priorities</b>	<b>17</b>
• Domestic Abuse	
• Neglect	
<b>Partnership working</b>	<b>18</b>
<b>Managing allegations against professionals</b>	<b>18</b>
<b>MSCB Budget</b>	<b>20</b>
• Income and expenditure 2008/09	
• Income and expenditure 2009/10	
<b>New Business Plan 2009-2010</b>	<b>22</b>
<b>Abbreviations</b>	<b>24</b>

## **Executive summary / performance summary**

Foreword for Jim Leivers, MSCB annual report.

This is my last report as Chair of the Medway LSCB. Over the last three years we have made tremendous progress in developing safeguarding services for the people of Medway. There is, as there always will be much more to be done but this report highlights the work completed and work still to be done. I commend it to you.

The MSCB has worked hard this year and achieved some notable developments. Amongst the boards developments this year is the well-supported child death overview panel who's main challenge is the small demographic of Medway.

The MSCB ratified and published Safer Recruitment Guidance as well as updated and new Serious Case Review guidance, which shows the determination of the board to re-evaluate all aspects of the work done and keep up to date with, and even ahead of, statutory guidance.

The training Sub Group delivered an extensively expanded training programme, which was received by a much wider audience than previous training programs. New programs include "Neglect of Neglect" and focuses on understanding the nature of neglect and its impact upon children as well as consideration of ways to assess and measure the potential for change.

The MSCB has developed a tool for S.11 audits for multi-agency use and these will be completed in 2009/10. This will ensure continued compliance with safeguarding children procedures and identify gaps in services.

The MSCB has demonstrated its dedication to involving children and young people in the services affecting them by involving them in developing a children's version of safeguarding procedures.

As always the MSCB prioritises remain in keeping Medway's most vulnerable children safe, providing children and young people with a safe environment and minimising the incidences of child abuse and neglect.

I would like to wish my successor well for the future and hope he enjoys his time as chair as much as I have done.

I would like to express my particular appreciation to Sally Mortimore Board manager and to Steve Dickens Board Administrator who have over the last three years shown a huge commitment to me and to the work of the Board they are a real asset and will I am certain continue to provide help, support and guidance to Board members

Jim Leivers, Independent Chair, Medway Local Safeguarding Children's Board

## **The Role of Medway Safeguarding Children Board**

The MSCB was established in April 2006 as the statutory successor of the Medway Child Protection Committee under the Children Act 2004.

The role and responsibilities of Local Safeguarding Children Boards are outlined in full in Chapter 3 of the key Government guidance document *Working Together to Safeguard Children 2006*. The MSCB operates according to this guidance.

The core objectives of the MSCB are:

- To coordinate what is done by each agency represented on the Board for the purposes of safeguarding and promoting the welfare of children in Medway
- To ensure the effectiveness of what is done by those agencies for that purpose

The MSCB seeks to fulfil these objectives by undertaking activity in connection with its core functions, which are as follows:

- Policies and procedures for safeguarding and promoting the welfare of children in the area are developed. Including:
  - setting out thresholds for service provision for children and young people
  - ensuring training is provided to meet local need
  - recruitment, selection and supervision
  - investigating allegations against those working with children,
  - ensure the safety and welfare of children who are privately fostered,
  - co-operate with neighbouring authorities
- The need to safeguard children and young people is effectively communicated and that the issue of raising public awareness is effectively addressed
- All agencies involved in the welfare of children and young people participate in the planning and commissioning of services
- The effectiveness of Board partners individually and collectively are monitored and evaluated
- Procedures to ensure a co-ordinated response to unexpected child deaths are developed
- Information about child deaths is properly collected and evaluated
- Serious Case Reviews are undertaken in line with the requirements of legislation and guidance

## Board Structure and Membership

The MSCB is the strategic group that ensures that the safeguarding objectives are coordinated, monitored and effective. It comprises of senior strategic executive officers of the agencies that make up the Board.

The MSCB is supported by four subgroups:

- Policy and Procedures subgroup,
- Training Subgroup
- Quality Assurance And Case Review Subgroup (QACR) and
- Business Planning Subgroup

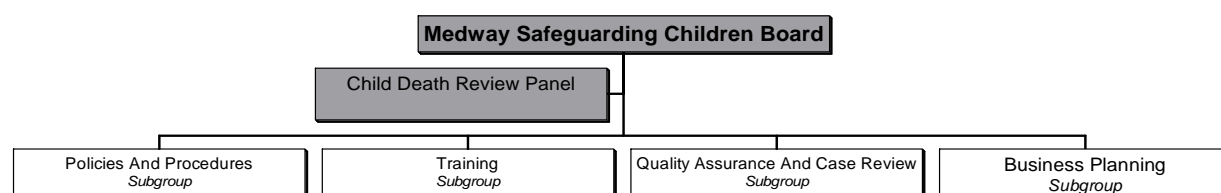
## The Child Death Overview Panel (CDOP)

The Child Death Overview Panel has been set up as required under Regulation 6 of the LSCB regulations. Working Together describes the scope of Child death Review processes as:

- Collecting and analysing information about each death with a view to identifying any case giving rise to the need for review mentioned in regulation 5 (1)(e) (Serious Case Review);
- Any matters of concern affecting the safety and welfare of children in the area of the authority and;
- Any wider public health or safety concerns arising from a particular death or from a pattern of deaths in that area;
- Putting in place procedures for ensuring there is a coordinated response by the authority, their Board partners and any other relevant persons to an unexpected death.

The Board and its associated Groups and subgroups are administered by the MSCB Administrator and supported by the MSCB Manager.

The approved structure is shown diagrammatically below:



The roles and responsibilities of the MSCB Subgroups can be found in the MSCB Constitution at [www.mscb.org.uk](http://www.mscb.org.uk)

## Review of business plan 2008-2009

The Medway Safeguarding Children Board (MSCB) Business Plan 2008-09 was designed to reflect the core objectives of the board as set out in its three year strategic plan agreed on 15 March 2007 and underpinned by the priorities of the Children and Young People's Plan (CYPP) and the Local Area Agreement (LAA). The MSCB's objectives in 2008-09 were also informed by its statutory functions and a number of key national policy and strategic drivers such as the National Children's Plan, the Staying Safe Action Plan and the LSCB Progress Review. Local drivers included action plans from serious case and lessons learned reviews and the Medway TellUs Survey.

This provided three key priorities for planning:

1. Keeping Medway's most vulnerable children safe
2. Providing children and young people with a safe environment
3. Minimise the incidence of child abuse and neglect

The 2008-09 Business Plan was ordered to reflect the different roles the Board fulfils:

1. Promoting best practice and improving safeguarding practice and procedures - this encompasses the statutory functions of:
  - Policies and procedures for safeguarding and promoting the welfare of children
  - Agency involvement and participation in the planning and commissioning of services
  - Child Death Functions
  - Serious Case Review functions
2. Quality assurance and scrutiny – this encompasses statutory functions:
  - The effectiveness of Board partners individually and collectively are monitored and evaluated
3. Local Safeguarding Priorities – encompassing local priorities as identified through case file audits, audits of children subject to Child Protection plans and primary concerns.

These will be considered in turn below. The Board's success in meeting its statutory functions is measured by:

- Section 11 audits that demonstrate year-on-year improvements in safeguarding children and promoting their welfare

- The extent to which agencies employ staff/volunteers to work with children utilise safer recruitment strategies to safeguard children and young people.
- The extent to which safeguarding referral procedures are clear, widely understood and consistently used.
- An increase in the number of children, young people and their families who are aware of safeguarding issues and are able to access appropriate and effective support and services.
- An increase in children and young people's involvement in evaluation of the work of the Board and partner organisations in delivering children's safety
- A demonstrable improvement in practice as recommendations from and Serious Case and Lessons Learned reviews are implemented.
- A demonstrable improvement in staff skills in areas targeted by the Board's training programme.
- High levels of commitment and engagement of partner organisations in the work of the Board.

## *1. Promoting best practice and improving safeguarding practice and procedures*

### **1. Employment and professional standards**

In December 2008, the MSCB ratified and published Safer Recruitment Guidance which set foundations for all partners and other organisations in Medway to adopt a robust approach to ensuring a safer children's workforce. This can be found at the [MSCB website](#)

The Safer Recruitment training which was delivered to school staff and governing bodies in 2007 and extended during 2008 which means that now, all schools in Medway [including Primary, secondary, independent and special schools] have at least one member of staff responsible for recruitment who has received accredited training. The training programme was adapted and rolled out during 2008 to MSCB Partners. Seven statutory agencies have now received the training and further training is planned for June 2009 for remaining agencies. Auditing of the implementation of safer recruitment policies and procedures will be undertaken during 2009 as part of MSCB Section 11 Auditing process.

### **2. Child death review processes**

The publication in 2006 of *Working Together to Safeguard Children* (hereafter *Working Together*) set out new processes in relation to reviewing child deaths, which had to be implemented by April 2008.

The MSCB developed procedures for responding to statutory requirements which were ratified in November 2007 and which were subject to review

throughout the period, with the agreement that they would be updated to ensure that they were fit for purpose after they had been in place and tested during 2008/09. The procedures will be redrafted to reflect the lessons that have been learned locally during the first year of implementation, for example in the ways in which information is shared and referral processes are managed, and will be in line with new Statutory Guidance due to be published in December 2009.

The Child Death Overview Panel (CDOP) has been successfully set up and the core membership agreed. A Designated Paediatrician for Unexpected Child Deaths has been appointed and supported by a Service Level Agreement between the Medway NHS Foundation Trust and NHS Medway.

The chair of the CDOP (the Director of Public Health) became an associate member of the MSCB in May 2009 and the Board signed off the first Child Death Overview Panel Annual Report in May 2009. This can be found on the MSCB [website](#).

The CDOP in Medway has been well supported by its constituent partners during this initial period, with positive engagement with the Coronial service and Medway Register Officer. There were 45 notifications of child deaths in Medway during the period. 17 of these deaths were of children from Medway and so subject to further exploration by the Panel. 4 of these deaths were unexpected. One death resulted in a referral for a Serious Case Review.

A key challenge to the CDOP during the period has been the small population and consequently the small number of deaths that have occurred during the period, which the Panel has been able to review. This has made it difficult to identify trends or patterns which may relate to public health matters and/or identify lessons on the prevention of unexpected deaths.

### **3. Child protection processes**

In October 2008, the Board commissioned a review of the Council's Independent Audit & Review service. This service is responsible for the independent chairing of reviews of looked after children and Child Protection Conferences. Children who are subject of a child protection plan in Medway are allocated, by postcode, to qualified social workers in each of the Integrated Area Teams (IAT's). The decision to make a child subject to a plan is recommended at a child protection conference chaired, 'off line', by a member of the Independent Review Team. On the basis of a clear body of reviews chaired by all six of the independent chairs as the basis for improvement planning. It was completed at the close of 2008/09 and findings will be available in July 2009.

Following the legal verdict in November on the death of Baby Peter, which received widespread media coverage, the MSCB commissioned an independent review of Child Protection processes in Medway by Ingson Ltd

and findings were shared by Cabinet briefing and published in March. The Review was based upon a 20% sample of children who were subject to Child Protection plans where particular risk issues had been highlighted – e.g. under 5s, domestic abuse, parental mental health and parental substance misuse.

The Ingson Review found that broadly speaking, basic systems and processes in place for protecting children were functioning well in Medway. It made some recommendations to improve practice which are being implemented and will be overseen by the MSCB as part of the 2009/10 Business Plan and reported to Overview & Scrutiny Committee. Recommendations included making changes to the format of reports and other documents required for the Child Protection Conference process, improving communication between partners regarding issues of Child Protection and ensuring that children's views are actively and sensitively sought and appropriately recorded.

Following the publication of Lord Laming's report on safeguarding child protection arrangements in England, MSCB commissioned the council, police and NHS Medway to conduct self audits against the Laming recommendations. The Board will also consider the implications for its operation arising from the report. It will receive all audit findings at the Board meeting in September, and findings will be reported to overview and scrutiny when the Board next presents an update in January 2010.

In the Autumn of 2008, a new course was developed to improve the quality and consistency of Child Protection Conference minute taking. This was completed by all administrators across Children's Services and the Audit and Review Service and has enabled both services to efficiently and accurately record the contents of multi-agency Child Protection Conferences and to improve the timeliness of minutes being completed and distributed.

#### **4. Serious Case Reviews (SCRs)/Lessons Learned Reviews (LLRs)**

The MSCB updated and published new Serious Case Review practice guidance in April 2008 and completed three Lessons Learned reviews during the period. Single and multi-agency progress against associated action plans, which contain recommendations, are monitored through the MSCB Quality Assurance and Case Review Subgroup (QACR) and a report on how this has been progressed by partner agencies are prepared by the Group for the MSCB.

In this way, the MSCB seeks to satisfy itself that recommendations are not only implemented but are also embedded by partners in order to ensure that good practice is promoted. This also allows for the MSCB to evaluate the impact of the action plans in place and this work will form the basis of the quality assurance role of the QACR subgroup during the next period.

As a result of the recommendations made by these reviews, a number of improvements have been made to multi-agency practice, including changes to how Child Protection Conferences are managed and partner agencies are represented. The Quality Assurance Unit of the council's independent reviewing officer / Audit and Review Team now gathers information about conferences that demonstrate best practice, but also where conferences for example are not quorate (the Kent & Medway Safeguarding Children Procedures require a minimum representation at a Child Protection Conference of Kent Police, Medway Council and health), where social work reports are not shared with parents and children and where reports are not provided to the chair of the conference prior to the meeting. This information is fed directly to senior managers to promote accountability and drive up practice standards. This has resulted in a decrease in inquorate Child Protection conferences and improved multi-agency representation at these meetings, which in turn has improved accountability and ensured that child protection conferences have access to all relevant information..

Also as a result of LLRs completed during the period, the MSCB's programme of multi-agency training has become more responsive to local need. This will be explored later in this report.

The MSCB disseminates the findings of reviews through the delivery of workshops for practitioners and managers which are aimed at improving practice, the identification of risk and risk assessment. These workshops (or practitioner for a) are consistently positively evaluated and demand for places is high. Again, greater detail is provided later in this report.

The quality of Individual Management Reports (IMRs) has continued to be a challenge to the MSCB during the period and has been addressed through the delivery of a number of workshops aimed at staff across all agencies who may be required to write IMRs on behalf of their agency or organisation. This should contribute to a more timely production and high quality of such reports to future SCRs and/or LLRs.

At the end of 2008/09, the MSCB undertook its first Serious Case Review which is due to be submitted to Ofsted in July 2009 and published later in the year.

## **5. Multi-agency Training and workforce development**

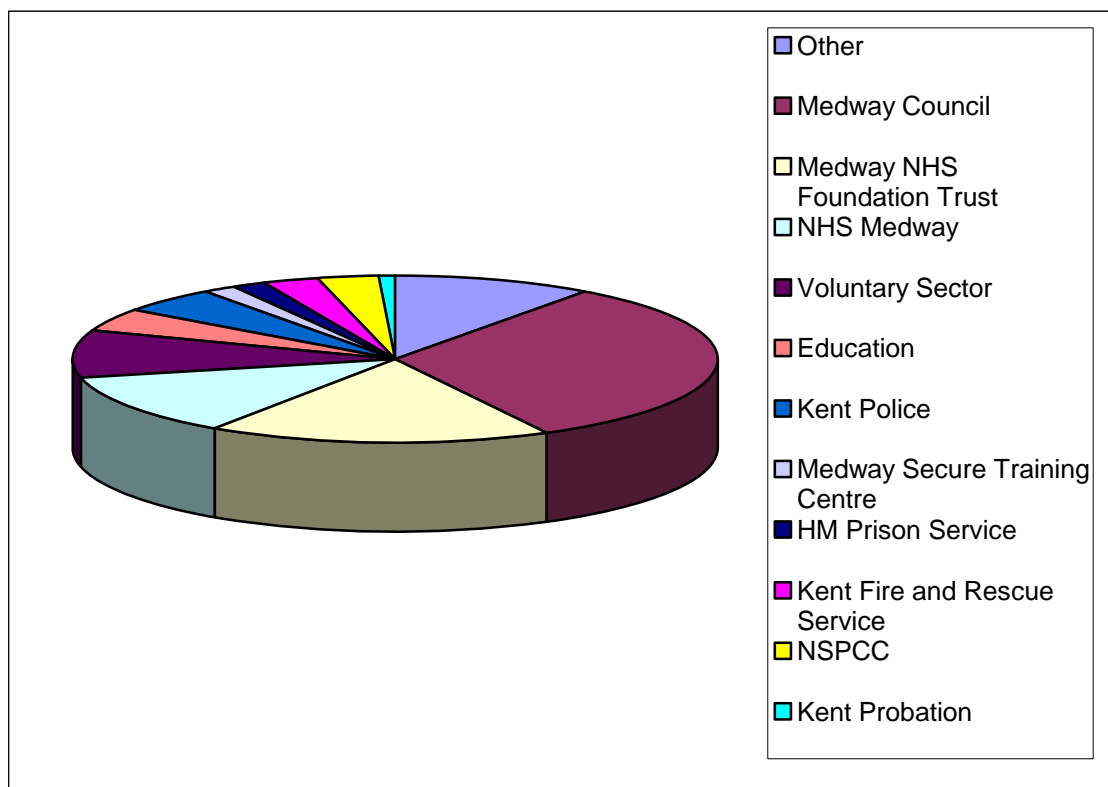
The Training Sub Group delivered an expanded training programme in 2008-09. This included a new Intermediate Child Protection course in response to demand from partners and practitioners. In response to Lessons Learned Reviews, Managing Child Protection Conferences training and a course focusing on child neglect were commissioned - neglect accounts for 57% of the reasons that children are subject to a Child Protection Plan in Medway. Practitioner Fora to develop multi-agency Working Together were also run quarterly and these events were well attended and received very positive

evaluations. Evaluation forms, completed by course delegates immediately following training for all MSCB courses during the year, were consistently positive and the results fed back to the Subgroup which makes recommendations to trainers and administrative support for action to improve training provision. A 6-monthly follow-up evaluation to ascertain impact on practice has been piloted but received extremely poor response. This was therefore not successful in providing data to aid future planning of training needs and work is continuing to find other ways for the Board to more effectively evaluate the impact of its training – for example through random telephone polls with delegates and their line managers.

Delegates who attended training events were from all of the statutory partners, and representatives from a number of local agencies and the voluntary sector, for example Home Start Medway, Kent Fire and Rescue Service, Kent Association for the Blind, NSPCC and independent nursery staff also attended.

The analysis of training uptake indicates that a wider range of courses was delivered than in the previous year and a total of 375 delegates attended these training events. The proportion of delegates from 'other' agencies had significantly increased. This would appear to indicate that the MSCB courses are reaching a wider audience and it is intended that in future the 'other' category will be further analysed to ascertain where delegates are employed so as to identify any other agencies which may benefit from receiving MSCB course promotional material.

( See Figure 1 below - Analysis of Training Uptake)



Between April 2008 and March 2009, 375 staff from local agencies attended a multi-agency training course run by the MSCB. The courses delivered were as follows:

2 Basic Awareness in Child Protection	(Level 1 training)
4 Intermediate Training in Child Protection	(Level 2 training)
1 Introduction to Domestic Abuse and Child Protection	(Level 2 training)
1 Training session on MARAC	(Level 2 training)
1 Case Conference and Core Groups	(Level 2 training)
1 Communicating and Engaging with Children	(Level 2 training)
1 Introduction to Sex Offending Behaviour	(Level 2 training)
1 Safer Recruitment- Training for Trainers	(Level 3 Training)
1 Advanced Training in Sex Offending Behaviour	(Level 3 training)
1 Neglecting Neglect	(Level 3 training)
2 IMR Workshops	
3 Practitioner Forums (covering Fire Safety, the dissemination of Lessons Learned reviews and the dissemination of the findings of the Case File Audit Group)	

Delegates that attended training events during the year were from the following agencies:

Medway Council	120
Medway NHS Foundation Trust	65
NHS Medway Community Health Care	45
Voluntary Sector	34
Education	17
Kent Police	18
Kent Fire and Rescue Service	10
Medway Secure Training Centre	7
from HM Prison Service	6
NSPCC	12
Kent Probation	3
Others (eg independent nursery providers, housing associations, hospice staff)	38

The Training Sub Group reviewed the courses offered in 2008-9 and proposed a further expansion of the programme for 2009-10 based upon a mapping exercise of local multi-agency training need undertaken by the Training Subgroup. The expansion included an increase in the frequency of Intermediate Child Protection Training and further courses relating to the needs identified in Lessons Learned Reviews, e.g. Working with Resistant and Non-engaging Families.

In partnership with the Medway CVS, the MSCB supported the first of three annual Voluntary Sector conferences, focusing on Safeguarding Children in

the sector attended by 93 delegates. This was delivered as part of the Children's Workforce Development Council bid. The NSPCC Safer Communities pack was launched as part of this as well as the CWDC Core Standards Training. During the year, 39 volunteers have completed the course.

## **MSCB Annual Conference**

The MSCB Annual Conference "Staying Safe in the Community" was held at the Kings School, Rochester on 3<sup>rd</sup> April 2008 and was attended by 100 delegates from a wide range of agencies, including the NSPCC, the Police, Medway Hospital, Medway Council and the Voluntary Sector. It featured keynote speeches from Donald Findlater ( Director of 'Stop it Now') who delivered a presentation focussing upon e-safety and Rainham Mark Grammar School presented a thought-provoking drama on the theme of Staying Safe. The conference attracted a great deal of local media interest.

## ***2. Communicating and Engagement***

In response to the statutory responsibilities of the MSCB as set out in Working Together to Safeguard Children 2006, the Board established an objective in its Constitution to 'communicate and consult about the work of the Board and safeguarding and promoting the welfare of children'.

The need for a communications strategy was reinforced by the Board's own self-assessment of it's strengths and areas for improvement carried out in Spring 2009 and feedback from the Independent Review of Child Protection in Medway Report that was completed by Ingson Ltd. This identified that the MSCB does not have a high profile amongst frontline staff and that there is not widespread knowledge about the Board's roles and functions.

The key actions were combined and taken forward in the publication of a Communications and Engagement Strategy which was agreed by the Board in March 2009. This document sets out an overview of what the Board aims to achieve and contains a suggested action plan which will be monitored regularly and updated on an annual basis. Key measures of success include:

- That all agencies and individuals are aware of their responsibility to safeguard children and promote their welfare
- That there is improved knowledge amongst the target groups of the 'key messages' of the safeguarding agenda
- That there is, within Medway, an enhanced understanding of safeguarding and child protection and how good practice in these areas can be achieved
- That there is improved knowledge locally about the Medway Safeguarding Children Board, its policies and procedures and how its resources and support can be accessed

- That the outputs from the Board (policy, procedures etc) reflect the views of its stakeholders; and are, as a consequence, implemented and there is widespread commitment to assisting with this
- That the priorities of the Board and the outputs resulting from these reflect the views of children and young people
- That the Board achieves its statutory objectives and functions and its own objectives and actions as set out in its business plan

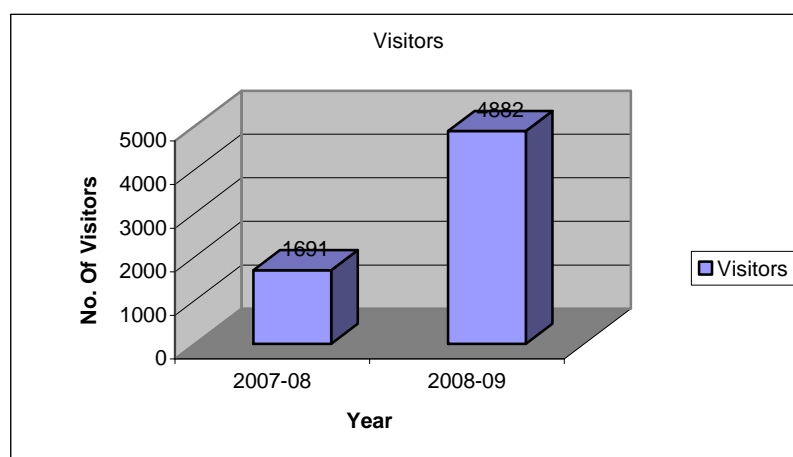
During the year, the MSCB published a number of leaflets for staff, parents, children and other members of the public with the aim of sharing information about policy, procedure and practice. These are as follows:

- Child Death Review Arrangements (for professionals)
- Child Protection Conferences and Core Groups (for parents)
- Child Protection Conferences and Core Groups (for professionals)
- The Independent Safeguarding Authority
- E-safety – booklet for parents
- Bullying – booklet for parents and staff
- Booklet for children moving into primary and secondary school pertaining to issues relating to safeguarding
- Safer recruitment (for professionals)

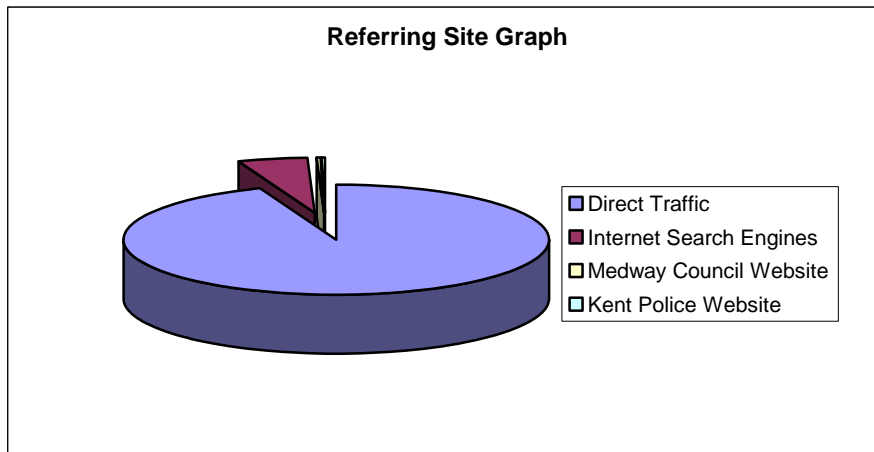
The MSCB also produced new practice guidance on:

- Domestic Abuse Protocols: Working with Young People in Schools
- Procedures and Practice Guidance Working with Young People who are Sexually Active
- Working With Unco-operative Families
- Schools Child Protection Model policy update
- Children not collected from School
- Safeguarding Children (guidance for the general public about how to act upon concerns for children)

The MSCB website is now live and during the period of June 2008-April 2009 had 4,882 visitors - a dramatic increase from the 1691 visitors the website achieved during 2007-08.



4,581 of the 4,882 visitors to the MSCB website arrived by direct traffic. This indicates that visitors are already aware of the website due to MSCB publications, leaflets and advertising of our website. 248 of the visitors arrived at the website by searching for 'Medway Safeguarding Children Board' via Internet search engines e.g. Google, AOL Search, MSN Search. 6 visitors found the MSCB website through the Medway Council Website and a further 16 visitors through the Kent Police website.



The most popular document that was downloaded via the MSCB website was Medway and Kent Safeguarding Procedures. During June 2008-April 2009 this document was downloaded 11,974 times. The second document which was downloaded frequently by visitors to the website was the Model Child Protection Policy for Schools, which was downloaded 930 times.

In 2008-09 the Medway Safeguarding Board worked with a group of young people to develop a [children's version of the Safeguarding Procedures](#).

### ***3. Quality Assurance and Scrutiny***

#### **1. Performance Framework**

It has proved to be a challenge for the MSCB to agree a set of performance indicators which demonstrates comprehensively how partners and the MSCB work together to safeguard and improve outcomes for children. Other Board's across the country have wrestled with the same issues. The Board has considered how it can supplement the baskets of national indicators which are routinely gathered by partner agencies to realistically demonstrate the impact that the MSCB has had on improving outcomes for children or whether there is a more helpful way of reflecting this. The Board agreed a draft set of performance data and has piloted a performance digest which will be developed further in the context of a broader Quality Assurance framework within the next period.

## **2. Safe people and safe places**

The MSCB aimed, through its 2008/9 Business Plan to embrace the broader definition of 'safeguarding' by setting goals to increase the priority and profile of children's safety in Medway across all agencies. To this end, it sought to promote a programme of protective behaviours to be delivered through schools via the Health Schools initiative. During the latter part of the period, the MSCB supported the development and publication of the E-Safety booklet for parents and ran a series of workshops in schools to boost parents' awareness of how their children may use the internet and the risks they may face. Workshops for children were also delivered in schools through the "thinkuknow" training programme which has trained 1272 children between October 2007 and July 2009.

The Anti-bullying strategy was also agreed by the MSCB during the year and a leaflet for parents was published to support this. The strategy was rolled out across schools in Medway through the PSHE programmes.

In terms of road safety, the 2009 Council plan reported that Medway is becoming a safer place to travel. The number of children killed or seriously injured on Medway roads has fallen by 51 per cent since 1998. In 2008/09 the number of children who died or suffered serious injury on Medway's roads was 14. None of these children were from Medway (this data is collected by the Medway Child Death Overview Panel and did not report the deaths of any Medway children as a result of a road traffic accident). During 2008/9 the junior road safety officers' programme was launched whereby pupils from primary schools promote and carry out road safety education in a variety of challenging ways, from school assemblies to competitions and special events. More than 80 per cent of schools in Medway now have school travel plans, which help schools develop alternatives to car travel to school. Medway Council is also encouraging young people to walk to school by extending walking bus schemes – supporting 36 buses involving 642 pupils during the period. As a result of these initiatives there has been no increase in the number of children travelling to school by car in the past year.

## **3. Section 11 Audits**

The MSCB completed its first biennial audit of partner agency's compliance with the requirement under Children Act 2004 section 11 whereby arrangements must be in place to safeguard children and promote their welfare. All partners completed a self audit. Action Plans to sustain compliance or rectify identified gaps were provided and agencies were asked to give reassurance that these were implemented. The MSCB monitored implementation in March and reported via the QACR group.

The findings from the Section 11 audit have been endorsed by the Board and

to facilitate the 2009/2010 audit a Benchmarking document has now been developed. The second biennial self-audit process will be completed in late 2009.

#### **4. Private Fostering**

The MSCB ensures the co-ordination and implementation of measures designed to strengthen private fostering notification thus the receipt of bi-annual reports from the team manager within Medway Council responsible for Private Fostering. During the year, two reports were received by the MSCB indicating that the procedures are in place and are judged to be effective.

Information regarding Private fostering now available on [MSCB website](#)

#### **5. Quality assurance of MSCB**

In 2008, it was agreed that the Independent Chair of the MSCB would present progress reports to the Overview & Scrutiny committee of Medway Council twice a year to enable elected members to scrutinise it's performance to comment upon the work of the Board and to hold the independent chair to account.

The Independent Chair provided a progress report to the committee in September 2008 and an additional report which outlined the MSCB's proposed review of Child Protection arrangements in Medway in January 2009. This included an update on local and national developments since the publicity surrounding the death of baby Peter in November 2008.

As part of the 2009/10 business plan, the quality assurance function of the MSCB will be further developed and enhanced by the QACR subgroup.

### ***4. Local Safeguarding Priorities***

#### **1. Domestic Abuse**

Nearly three quarters of children subject to a Child Protection plan live in households where domestic abuse occurs and 52% of child protection cases involve domestic abuse. The MSCB continues to be a member of the Kent and Medway Domestic Violence Strategy Group (KMDVSG) and a training programme to promote awareness of domestic abuse is being rolled out across schools and other agencies in Medway. Children who live with domestic abuse are at increased risk of behavioural problems and emotional trauma and mental health difficulties in adult life. Multi-agency training focussing on the impact of domestic abuse on children is being delivered by two KMDVSG accredited trainers on behalf of the MSCB. An analysis of feedback from the one-day course delivered during the period indicates that participants found the course of great benefit.

In July, the KMDVSG Chair (who is also the vice chair of the MSCB) made a presentation to the Board regarding Domestic Abuse in July 2008. All partner agencies with a seat on the KMDVSG now have Domestic Abuse policies in place to ensure that, as far as possible, all employees are aware of their responsibilities and the procedures to follow should they become aware of domestic abuse impacting on colleagues or children. The Domestic Abuse protocol 'Working in Schools' was endorsed in September 2008. This will be rolled out to schools during 2009/10.

## **2. Neglect**

Neglect is present in approximately 60% of cases of children who have a child protection plan in place and the MSCB has a priority to develop a better understanding of the causes of neglect and to improve the co-ordination of multi agency responses. An audit of Child Protection cases was undertaken by Medway Council.

Training, entitled 'Neglect of Neglect' was delivered by Jane Wiffin in September 2008 and focused on understanding the nature of neglect and its impact upon children as well as consideration of ways to assess and measure the potential for change. Further training on Neglect is scheduled for 2009-2010 following comments from delegates that this training was very worthwhile and appropriate for their needs.

### **Other business relating to MSCB statutory functions**

#### **Partnership working**

Under the Licensing Act 2003, the MSCB is the designated authority for ensuring that licensing applications make adequate provision for safeguarding children in Medway. Board staff are responsible for ensuring that minimum standards are adhered to in new premises applications and making submissions when they are not. Each licensing application is considered on its merits and during 2008-9 a total of 37 licence applications were considered. All responses and challenges were made within the time limits and no appeals were made. If applications are found to be lacking, staff provide advice and support to ensure requirements are met.

In partnership with Healthy Schools and the Family & Parenting Institute, the MSCB produced a new School Transition booklet, entitled 'Every Parent Matters' which has now been distributed throughout Medway. The MSCB has also been consulted on the Children and Young People's Plan.

#### **Managing allegations against professionals**

The Local Authority Designated Officer (LADO) presents biannual reports to the QACR subgroup. All partners are required to have in place senior officers with responsibility for ensuring that their organisations follow procedures as

set down in Working Together to Safeguard Children 2006 and it is agreed that these arrangements work well and are effective in protecting children from inappropriate adult behaviour.

There were 106 referrals made in 2008/09, compared with 104 in the previous year.

Of these, the referrals fall into the following categories:

- 3 related to allegations of neglect
- 19 related to allegations of sexual harm
- 3 related to allegations of emotional harm
- 81 related to allegations of physical harm.

Of the referrals in relation to physical harm, investigations showed that 44 out of 81 (or 54%) were referrals following from a member of staff carrying out an authorised physical intervention or restraint. 41 of these 44 were from the secure estate (that is, the Secure Training Centre or Youth Offender Institution). Referrals from YOI Cookham Wood increased in number in the last six months of the year which was as predicted, given its change in roll (from an adult prison with a small juvenile unit for 17 16-18 year old young women to a YOI for 157 young men) and consequent increase in numbers of children/young people in custody.

The breakdown of referrals by agency in relation to the subject of the allegations showed that between them 83% of all referrals are allegations against education staff, the secure estate and foster carers.

secure estate	42%
education	25%
foster carers	17%
others	16%

61% of referrals were concluded within 1 month and a further 23% within 3 months. Working Together to Safeguard Children 2006 cites data which suggests that 80% of cases should be resolved within one month and 90% within 3 months although these are performance indicators due to the complex variables involved in meeting timescales (Appendix 5, section 10).

Recorded outcomes include:

- 59% of referrals led to s47 enquiries being made
- 17 criminal investigations were completed.
- 1 person was referred to the DCSF as unsuitable to work with children.
- 13 staff were subject to disciplinary procedures
- 4 staff were dismissed.

This information is reflected within the training content of the MSCB's Safer Recruitment Training for Trainers Programme delivered during the year.

### MSCB Budget for 2008/09

<b>Partner agency financial contributions</b>	<b>£</b>	<b>%</b>
Medway Council	58,524	55
NHS Medway	28,000	26.4
Kent Police	11,000	10.4
Kent Probation	3,882	3.6
HM Prison Service	2,500	2.4
Medway Secure Training Centre	1,802	1.7
CAFCASS	550	0.5
<b>Subtotal</b>	<b>106,258</b>	
<b>Additional Income</b>		
Safeguarding Grant	38,000	
Miscellaneous (eg revenue from training)	1,275	
Underspend from 2007/08 carried forward	12,181	
<b>Total</b>	<b>157,714</b>	

### MSCB Expenditure 2008/09

	<b>£</b>	<b>%</b>
Staff Costs (including expenses)	91,700	77
Ingson Child Protection Review	10,500	9
Office Costs (including printing and stationery)	6,500	5
Lessons Learned Reviews	5,800	5
Training Costs	2,800	2
Computer Expenses	1,300	1
Conference Expenses	900	1
<b>Total</b>	<b>119,500</b>	<b>100</b>

### MSCB Budget for 2009-2010

<b>Partner agency financial contributions</b>	<b>£</b>	<b>%</b>
Medway Council	83,524	62
NHS Medway	30,000	22
Kent Police	11,000	8
Kent Probation	3,882	3
HM YOI Cookham Wood	3,000	2
Medway Secure Training Centre	2,120	1.5
CAFCASS	550	0.5
<b>Subtotal</b>	<b>134,076</b>	

<b>Additional Income</b>		
Safeguarding Grant	39,520	
Contribution from GOSE (towards cost of independent Child Protection Review)	5,000	
Miscellaneous (eg revenue from training)	1,875	
Underspend from 2008/09 carried forward	38,240	
<b>Total</b>	<b>218,711</b>	

### **Projected MSCB Expenditure 2009/10**

	<b>£</b>
Staff Costs (Salaries and independent chair)	144,023
Meetings (including training events)	4,500
Staff expenses	1,300
Printing/stationary (including website)	8,300
SCR/LLR costs ("including Abigail")	31,200
Computer Expenses	500
Conference Expenses	700
Accommodation and overheads	14,300
<b>Total</b>	<b>204,823</b>

## **New Business Plan 2009-2010**

This MSCB's 2009-2010 Business Plan sets out what the MSCB aims to achieve this year. It is written in the context of changes locally – the new Children's Trust has been established and agreed the Children and Young People's Plan 2009-11, and nationally – in response to Lord Laming's report into child protection arrangements in England. To inform the development of this plan, the Board carried out its own stock-take and commissioned an independent review of child protection arrangements in Medway.

The MSCB has statutory responsibilities which guide its work, as well as locally determined priorities to respond to local need. For 2009/10 MSCB will deliver its statutory responsibilities and will give particular focus to:

1. Improving quality assurance of safeguarding practice and multi agency working to ensure Medway's most vulnerable children are protected
2. Ensuring safeguarding activity focuses on the most vulnerable groups
3. Participation and engagement of service users including young children
4. Evaluating the impact of MSCB training programmes
5. Increasing the sharing of good and effective practice
6. Improving feedback and communication from the Board to all partner agencies

In doing so, the MSCB intends to deliver the following outcomes against which it will judge its success:

- Child protection processes are fit for purpose, are consistently used and effectively safeguard Medway's vulnerable children
- Through rigorous quality assurance, MSCB drives an improvement in practice which leads to improved safety for Medway's most vulnerable children and young people
- The voice of children and young people is listened to and their views inform decision making and improvement of safeguarding policy and practice
- Multi agency collaboration reduces the number of preventable child deaths in Medway
- The children's workforce is knowledgeable and provides high quality services and practice across all sectors

- The risk to children from those who work with them is minimised
- Increased awareness of MSCB, safeguarding issues and how to access appropriate support and services amongst children and young people, the community and staff in partner agencies
- Children are able to identify risky situations and know what to do and who to contact
- The risk to children subject to private fostering arrangements is minimised through effective coordination, notification and assessment
- Recommendations from serious case reviews and lessons learnt reviews are effectively implemented to improve child safety, with reviews completed within time frame and of good quality
- All agencies give high priority to safeguarding and are compliant with their statutory responsibilities in this area (Section 11)
- Incidents of domestic violence are reduced and there is a reduction in the numbers of children who witness and are affected by domestic violence
- Multi agency preventative services are targeted to effectively support Medway's most vulnerable children and young people (Board discussion is needed on the exact focus it wishes to take on this priority outcome identified at our stocktake)
- The MSCB is held to account, is representative and can be shown to make a positive impact in promoting outcomes for children and young people

Appendix 1  
**Abbreviations**

MSCB	Medway Safeguarding Children Board
LSCB	Local Safeguarding Children Board
DCSF	Department for Children Schools and Families
LAA	Local Area Agreement
CYPP	Children & Young People's Plan
LLR	Lessons Learned Review
SCR	Serious Case Review